

# ATTENTION:

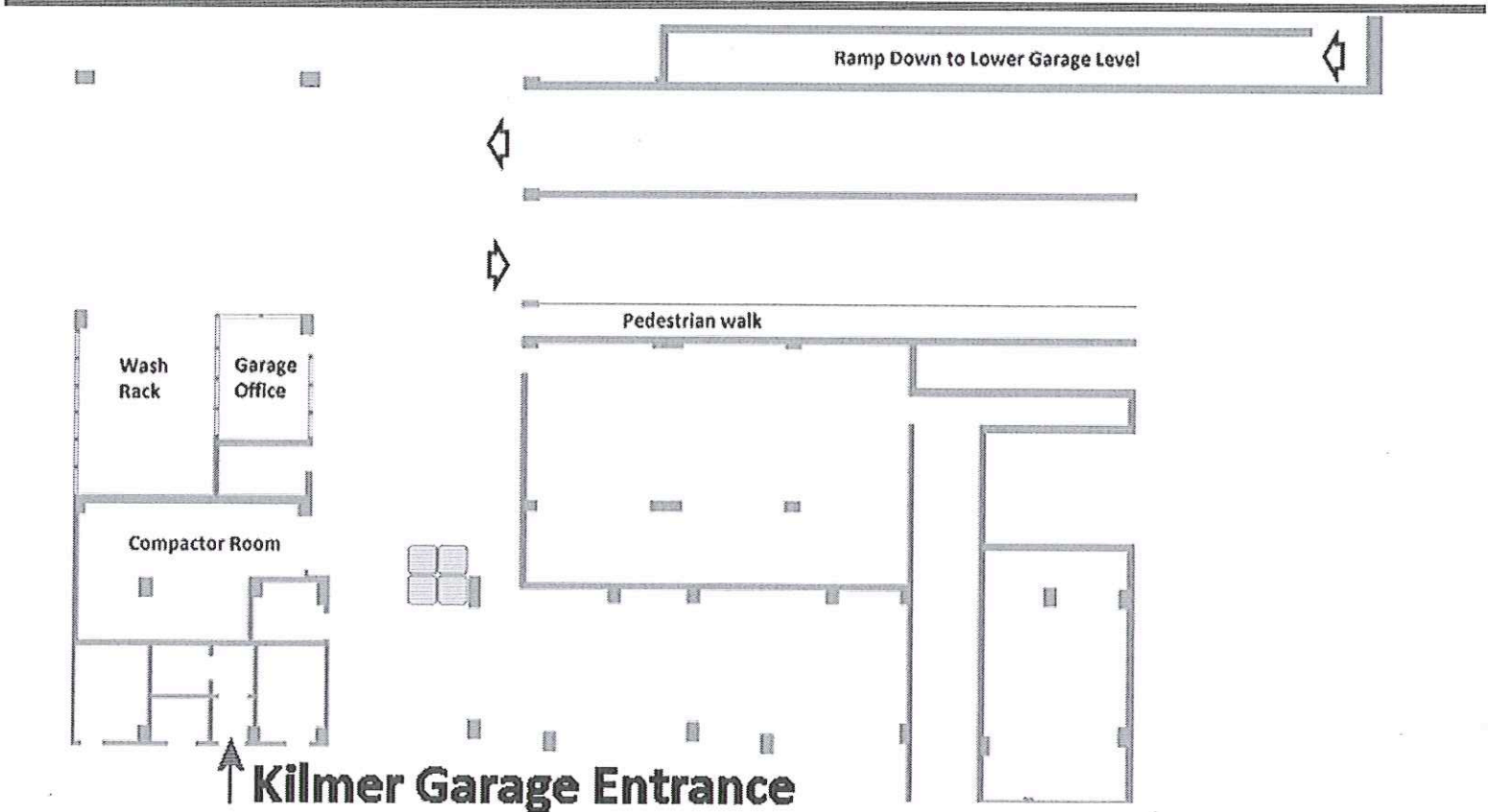
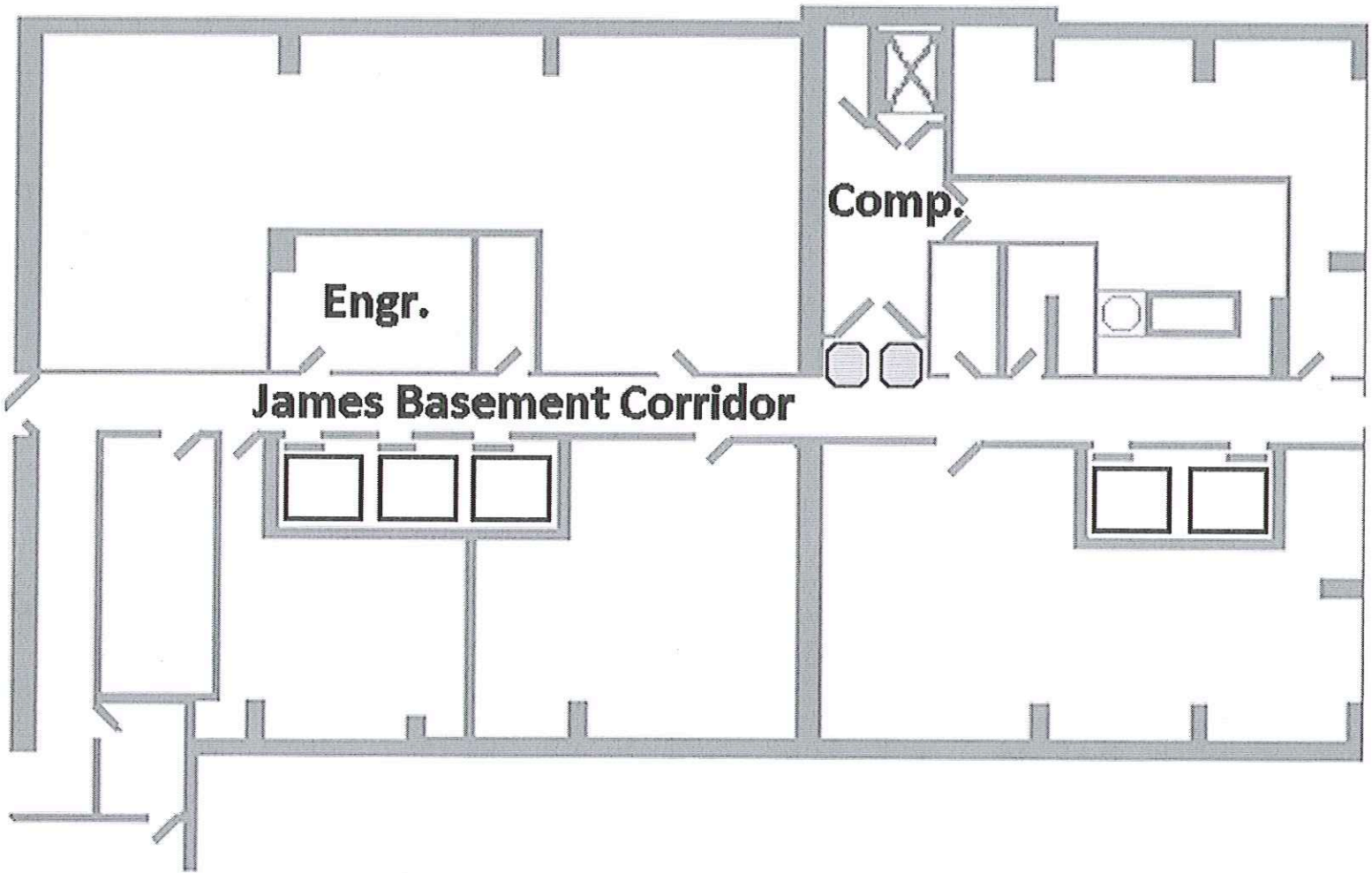
## SINGLE SOURCE RECYCLING PROGRAM IS IN EFFECT AT JAMES/KILMER

---

- **Please do not throw recyclables down the chute.**
- **USE THE BLUE BAGS!! You may also use a brown paper bag (which is recyclable material).**
- **Rinse clean your recyclables.**
- **Break down all cardboard boxes.**
- **Recyclables do not have to be separated by type.**
- **You should deposit recyclables in either of the recycling containers in the basement of James or in the containers at the Garage first floor, outside of the office.**

**If you need additional information, please reference the June 2011 newsletter, speak to Maintenance Staff, or contact the Management Office.**

# James and Kilmer recycling locations





*James/Kilmer*  
Condominium Association



## SINGLE STREAM RECYCLING

### CO-MINGLED RECYCLING PROGRAM

Please find the following list of acceptable items and some of the unacceptable items for this recycling program. All items for recycling should be washed (if applicable) prior to being placed in the recycling container. There is no need to remove any lids from both plastic or glass bottles, no need to remove labels. These items can be placed in the same container and can be bagged or placed in the container loose.

#### ACCEPTABLE

- Aluminum Cans, Aluminum Foil and Aluminum Trays
- Bi-Metal and Tin Cans
- Aseptic Packing (milk cartons and juice boxes)
- Plastics #1 (soda, juice and water containers)
- Plastics #2 (milk and juice jugs and detergent containers)
- Plastics #3 (health and beauty products and household cleaners)
- Plastics #4 (margarine tubs, frozen dessert cups and 6 and 12 pack rings)
- Plastics #5 (Yogurt cups, ketchup bottles and syrup bottles)
- Plastics #7 (narrow neck containers only)
- Clear and Colored Glass Bottles (no windows or ceramics)
- Newspapers and Inserts
- Magazines
- Brown Paper Bags
- Chipboard Boxes (cereal boxes, food mix boxes and gift boxes)
- Carrier Stock (soda and beer can carrying cases)
- Office Paper (white and colored papers, envelopes, copy and fax paper)
- Corrugated Cardboard (No wax cardboard boxes)
- Paper back books (including telephone books, no hard cover books)

#### UNACCEPTABLE PLASTICS

- No motor oil, insecticide, herbicide or hazardous chemical containers
- No Plastic bags they should be returned to grocery or department store
- No plastic film (no plastic sheets, tarps or wrap)
- No expanded foam or clear polystyrene

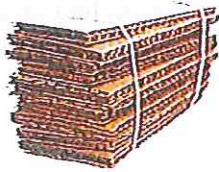
*"There is no substitute for service."*

# Single Stream Recycling

Are You Recycling?  
Ask Us How, 1-800-463-9691



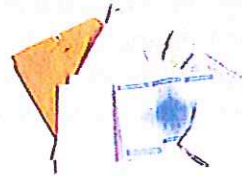
## ACCEPTABLE ITEMS:



Flattened Cardboard



Magazines



Office Paper



Junk Mail



Phone Books



Paperboard



Brown Paper Bags



Newspapers



Plastic Bottles



Glass Bottles & Jars



Aluminum Cans,  
Aluminum Foil & Pie Tins



Steel Cans &  
Empty Aerosol Cans

## UNACCEPTABLE ITEMS:



Plastic Bags



Food Waste



Wood

PUT EVERYTHING IN ONE CONTAINER - NO MORE SORTING!

